



MY DESIGN SLIDING DOOR.

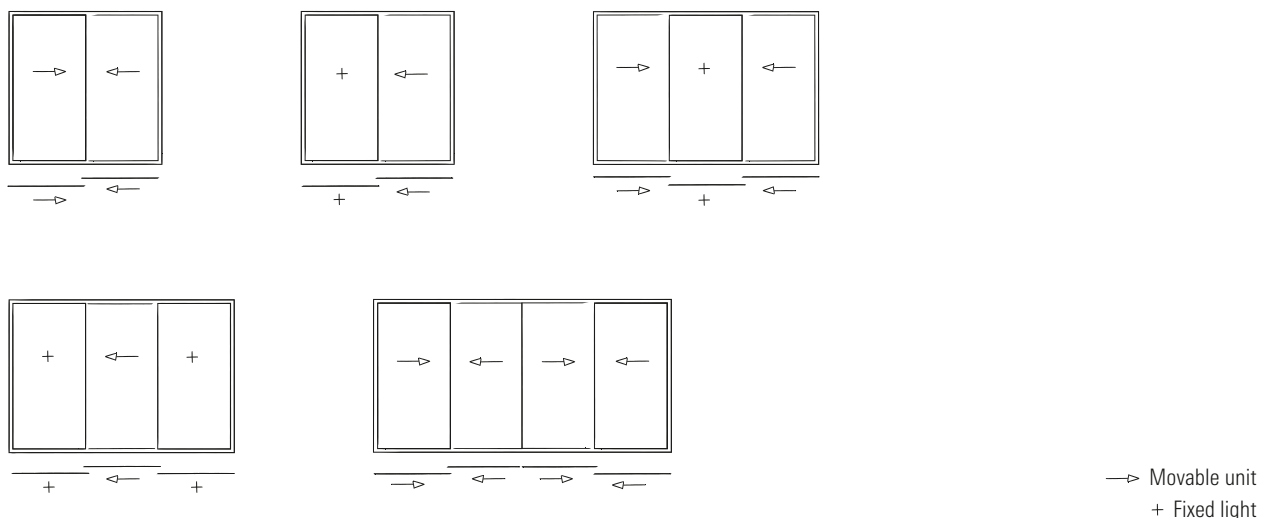
TECHNICAL DATA

SCHÜCO

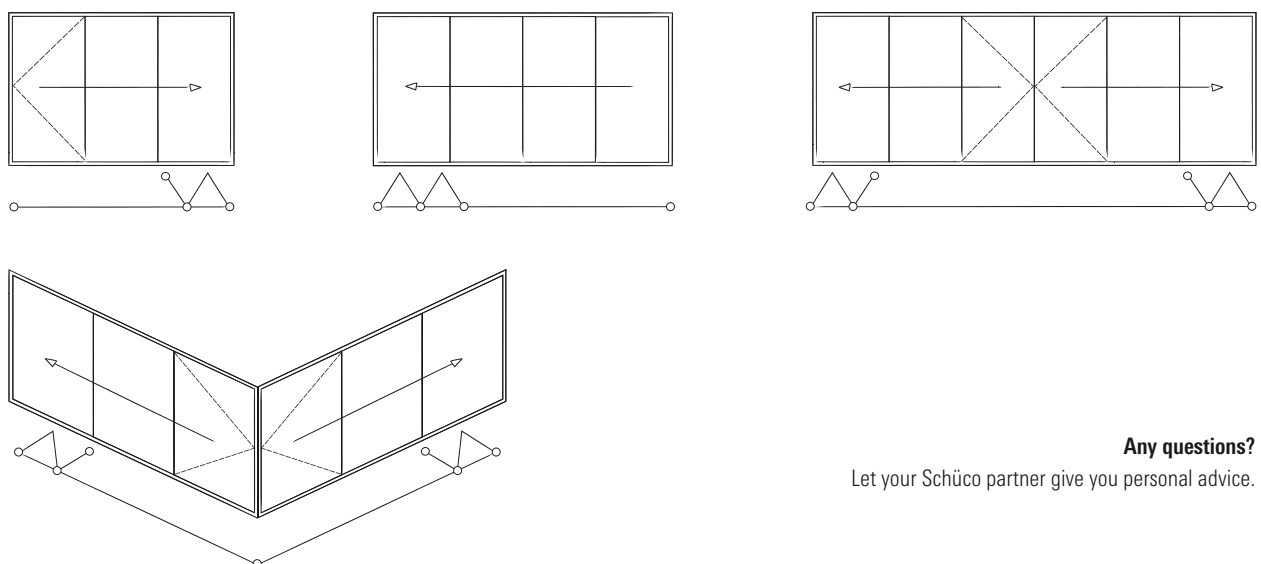
Opening types

Schüco Design sliding doors open up new spaces in a variety of ways. Whether you prefer sliding or folding doors, we have the right solution for your home. The opening types available to you depend on which sliding door design and materials you choose. For example, we offer opening types with single, double, or triple tracks, 90° corner solutions, and sliding doors which open to the inside or outside. Have a look at some of our customers' favourite designs.

PANORAMA AND CLASSIC DESIGN



FOLDING DESIGN



Any questions?

Let your Schüco partner give you personal advice.

The Schüco Design

An overview of sliding doors

Panorama, Classic or Folding - which sliding door design would best fit your building project? Compare the different properties of each design and find out.

DESIGN

Material (A = Aluminium, P = PVC-U)

Customisable colours and surface finishes

Max. vent width/height in mm

Max. unit width/height in mm

Face width of interlock section / folding section

Frameless

Level threshold

Properties

Burglar resistance

Thermal insulation U_w

Sound reduction

Operation

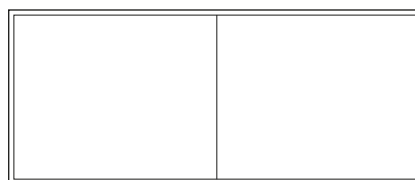
Smart home compatible

***Optional underfloor base frame or threshold tracks.

**Barrier-free level threshold.

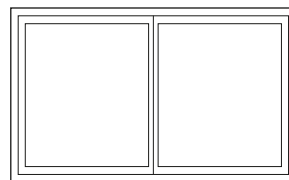
***The values refer to a type 1 sliding door (two-part unit, coloured, standard vent profile).

Panorama Design



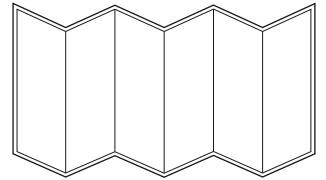
ASS 39 PD.NI	ASE 67 PD	ASS 77 PD.HI	AS AL 75	LivingSlide Panorama
A	A	A	A	P
Yes	Yes	Yes	Yes	Yes
3000 / 3500	3200 / 3000	3200 / 3500	8000 / 6000	3215 / 2450
18,000 / 3500	19,200 / 3000	19,200 / 3500	32,000 / 6000	6500 / 2600
37 mm	31 mm	37 mm	66 mm	79 mm
Yes	Yes	Yes	Yes	Yes (option available)
No	Yes	No	Yes*	Yes (option available)
Up to RC 1N	Up to RC 2	Up to RC 2	Up to RC 3	Up to RC 2
From 1.9 W/m ² K	From 1.0 W/m ² K	From 0.96 W/m ² K	0.83 W/m ² K	1.3 W/m ² K
–	Up to 46 dB	Up to 42 dB	Up to 44 dB	Up to 34 dB
Manual	Manual	Manual or automatic	Manual or automatic	Manual or automatic
No	No	Yes	Yes	Yes

Classic Design



ASE 60 (Design Line)	ASE 80.HI (Design Line)	EasySlide	LivingSlide
A	A	P	P
Yes	Yes	Yes	Yes
3200 / 3500	3200 / 3500	2228 / 2176***	2465 / 2468***
21,000 / 3500	21,000 / 3500	4500 / 2300***	5000 / 2600***
102 / 112 (40)	102 / 112 (40)	108	106
No	No	No	No
Yes**	Yes**	No	Yes (option available)
RC 2	RC 2	Up to RC 2	Up to RC 2
From 1.1 W/m ² K	From 0.99 W/m ² K	1.87 W/m ² K	1.3 W/m ² K
Up to 41 dB	Up to 43 dB	Up to 43 dB	Up to 45 dB
Manual or automatic	Manual or automatic	Manual	Manual or automatic
Yes	Yes	No	Yes

Folding Design

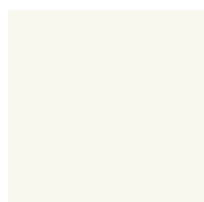


AS FD 90.HI	AS FD 75	ASS 70 FD (in HD Design)	ASS 80 FD.HI	LivIng
A	A	A	A	P
Yes	Yes	Yes	Yes	Yes
1500 / 3500	1500 / 3000	1200 / 3000 (1500 / 3000)	1200 / 3000	900 / 2400
10,500 / 3,500	10,500 / 3,000	–	–	4000 / 2514
90	90	120	112	192
No	No	No	No	No
No	No	No	No	No
Up to RC 2	Up to RC 2	Up to RC 2	Up to RC 2	Pending
Up to 0,8 W/(m ² K)	Up to 1.0 W/m ² K	Up to 2.4 W/m ² K	Up to 1.3 W/m ² K	Pending
Up to 47 dB	Up to 47 dB	–	Up to 47 dB	Pending
Manual	Manual	Manual	Manual	Manual
No	No	No	No	No

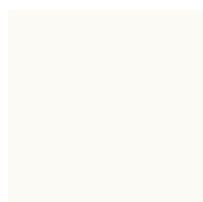
Colouring

When you opt for a Schüco Design sliding door, you can personalise your colour scheme too. Choose from a huge variety of RAL and DB colours and woodgrain finishes, so that your sliding doors match your home's façade or your interior furnishings. If you like, you can even decide to have two different colours for the inside and outside. The Schüco AutomotiveFinish technology also offers PVC-U frames with a metallic look.

OUR STYLISH ALUMINIUM SURFACE FINISHES



Pure white
RAL 9010



Traffic white
RAL 9016



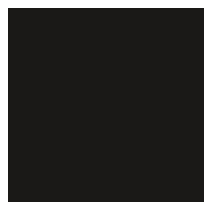
Grey aluminium
RAL 9007



Anthracite grey
RAL 7016



Dark grey
RAL 7021



Jet black
RAL 9005



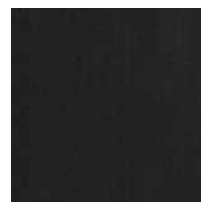
DB 703



Natural metallic
Euras C0

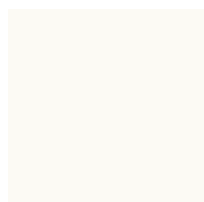


Dark bronze
Euras C34



Black
Euras C35

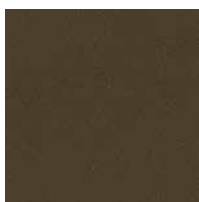
OUR ON-TREND PVC-U SURFACE FINISHES



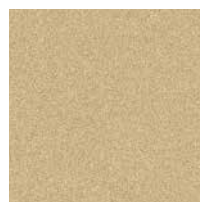
Traffic white, similar to
RAL 9016 (unfoiled)



SAF-DB 703



SAF Deep bronze



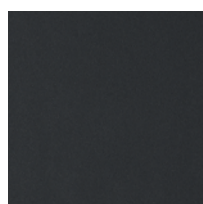
SAF RAL 140-M



SAF RAL 9007



Anthracite grey, gloss
RAL 7016



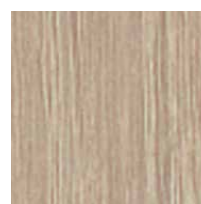
Black, Ulti-Matt



Walnut



Winchester XA



Sheffield oak light

