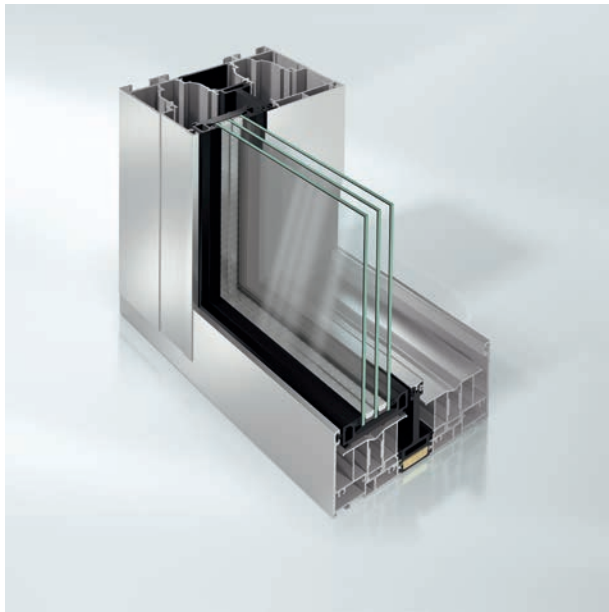

SCHÜCO ASS 77 PD.HI MANUAL

ALUMINUM SLIDING SYSTEM



SCHÜCO

SCHÜCO ASS 77 PD.HI MANUAL



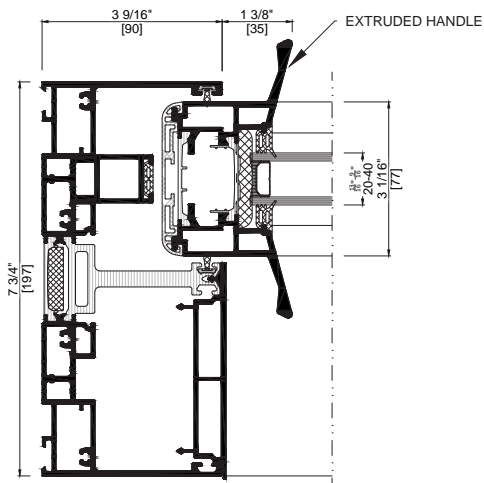
Schüco Sliding System ASS 77 PD.HI manual

The Schüco Aluminum Sliding System ASS 77 PD.HI is easy to operate, has almost limitless design options and provides the highest level of transparency. A highly effective combination of aluminum and various types of thermal breaks provide superb thermal insulation.

The advanced manually operated Schüco ASS 77 PD.HI sets new standards with an integrated, vent-height pull grip. In this way, the sliding system is not only easier to operate, it also has an attractive vent design.

Further innovations include the manual opening types with 90° corner without mullion and with a locking point in the double vent. An adjustment device for the subsequent adjustment of the outer frame is also available, whereby the adjustment screws can be reached through the outer frame at any time. This is a great benefit with ceiling deflections, for example.

With the Schüco ASS 77 PD.HI, large sliding systems can be created with maximum transparency and light penetration. The large glazed panoramic system offers almost unlimited design options.



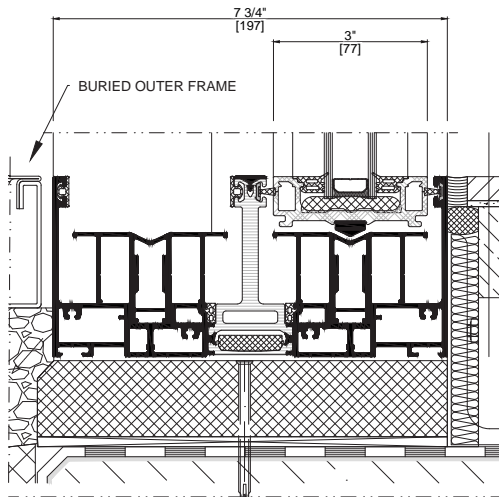
Schüco Sliding System ASS 77 PD.HI

PRODUCT BENEFITS

- Floor-to-ceiling glazing with maximum transparency allows as much light as possible to enter due to face width from just 1-3/8" (35 mm) in the interior interlock section and a concealed outer frame
- Wide choices of styles for design freedom
- Asymmetrical subdivision of leaves
- The outer frame height of just 3-9/16" (90 mm) at the jambs and sill allows integration in the building structure even with a limited projection
- Integrated vent-height pull grip for a high level of user comfort and attractive vent design, also available as lockable version
- Installation of outer frame in existing buildings with limited floor installation height
- Software supported calculation of asymmetrical units and modular solutions: simple, flexible design of the opening types
- Multiple fabrication benefits



Maximum transparency with narrow face widths for a Panorama Design



Detail of Schüco Sliding System ASS 77 PD.HI manual

TECHNICAL DATA ASS 77 PD.HI MANUAL

Configurations	TYPE 2A	TYPE 2A/1	TYPE 2B	TYPE 2C
	TYPE 2D	TYPE 2D/1	TYPE 2G/1	
Max. Dimensions	126" x 118" (3200 mm x 3000 mm)			
Max. Vent Weight	1100 lb (500 kg)			
Glass Thickness	13/16" – 1-15/16" (20 mm – 50 mm)			
Water Tightness	8 psf (383 Pa) double track (XO, XX)			
AMMA Rating	CW-PG 40 double track (XO, XX)			
Hardware	Sliding only			
Thermal Example*	0.38 Btu/hr-ft ² -°F			
	*Information based on NFRC standard test size with a TGI wave spacer, IGU U Value 0.29			

Are you planning a building project using Schüco systems or would like to in the future? **Contact us.**

Schüco develops and sells system solutions for windows, sliding doors and facades. In addition to innovative products for residential and commercial buildings, the building envelope specialist offers consultation and digital solutions for all phases of a building project – from the conceptual idea through final design onto fabrication and installation. Machinery for fabrication and a 360° cycle of sustainability complement the range of products and services.

With more than 4900 employees worldwide, Schüco strives to be the industry leader in terms of technology and service today and in the future. To this end, the company is always developing and testing new products and services for the entire building envelope, taking into account current market trends and standards. 12,000 fabricators, developers, architects and investors around the world work together with Schüco. The company is active in more than 80 countries and achieved a turnover of 1.75 billion USD in 2017.

Schüco USA LLLP

240 Pane Road
Newington, CT 06111
Email: info@schuco-usa.com
Phone: +1 860.666.0505

www.schuco-usa.com

