



AT 525 ALUMINIUM-FRONT DOOR





CHARACTERISTICS

 **Thermal insulation** (in W/m²K)
U_D up to 0,87

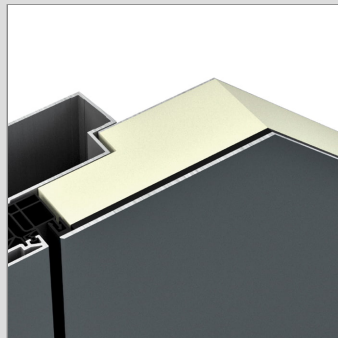
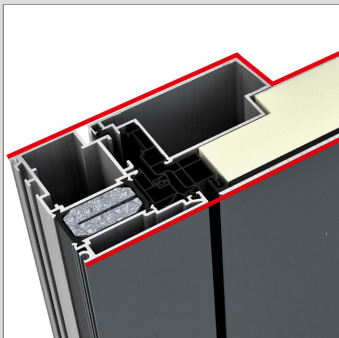
 **Sound reduction** (in dB)
up to 30

 **Security**
up to RC2

 **Locking**
Multi-locking

 **Profile depth** (in mm)
93

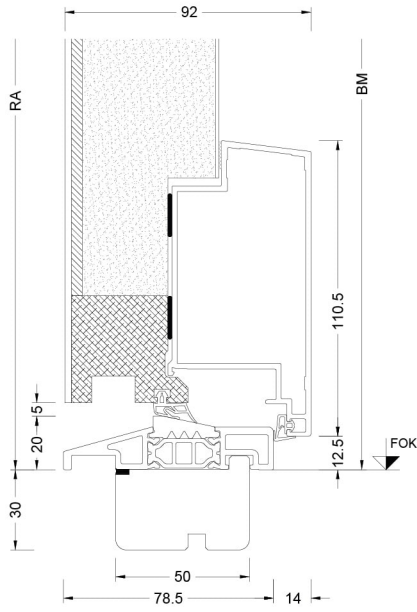
I-tec Open



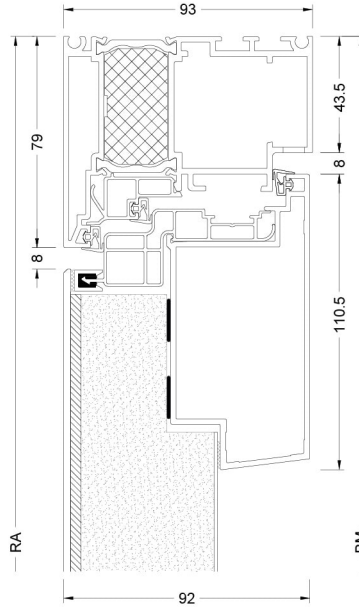
This new entrance door features a flush design on the outside and a square edged design on the inside. The insulating foam core ensures excellent climatic stability. Easy care and cleaning thanks to smoothed sash rebate. Standard 5-point locking provides maximum security.

Cuts

Schnitt unten / Section - bottom



Schnitt seitlich, oben / Section - side top



- BM Bestellmaß / Ordering size
- FOK Fußbodenoberkante / Finished floor level
- GM Glasmaß / Glass size
- RA Rahmenseitenmaß / Outside frame size
- TM Teilungsmaß / Division size