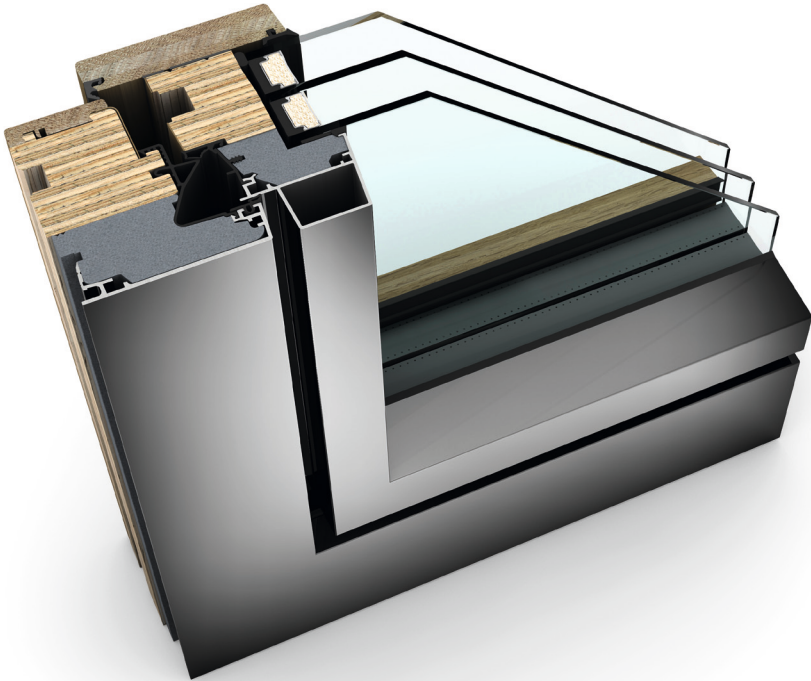







HF 410 TIMBER/ALUMINIUM WINDOW



CHARACTERISTICS

Thermal insulation <small>(in W/m²K)</small>		U_w as low as 0.64
Sound reduction <small>(in dB)</small>		up to 45
Security		up to RC2
Locking		concealed
Construction depth <small>(in mm)</small>		85

I-tec Glazing

I-tec Core

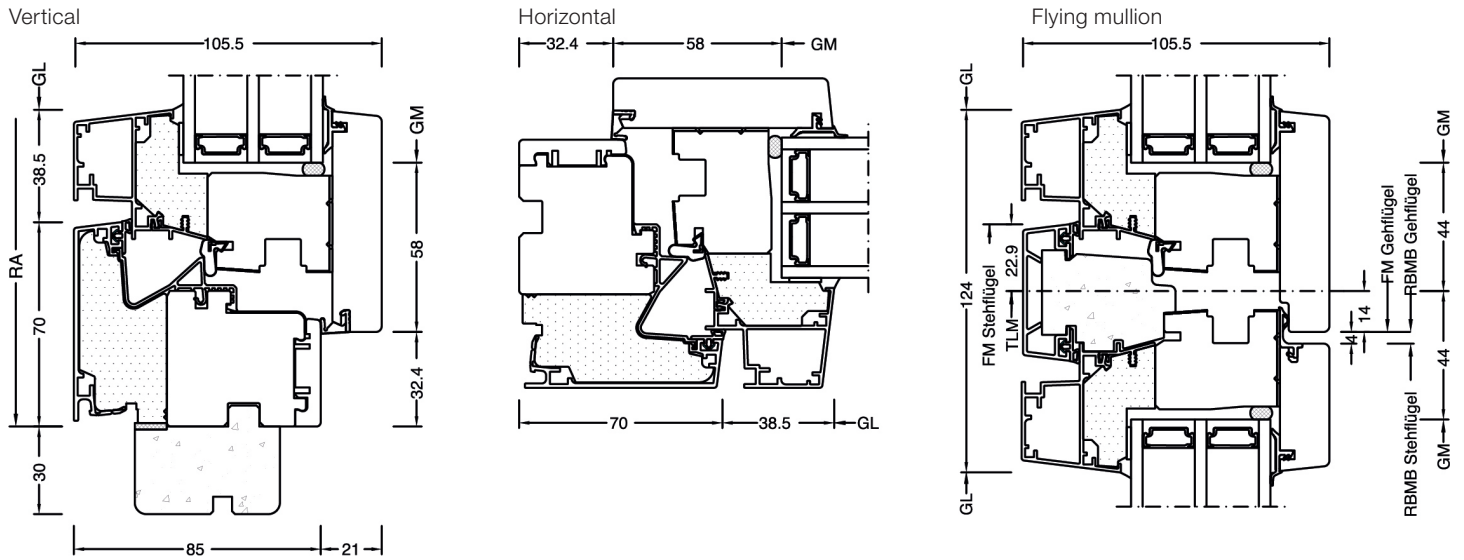


NEU!



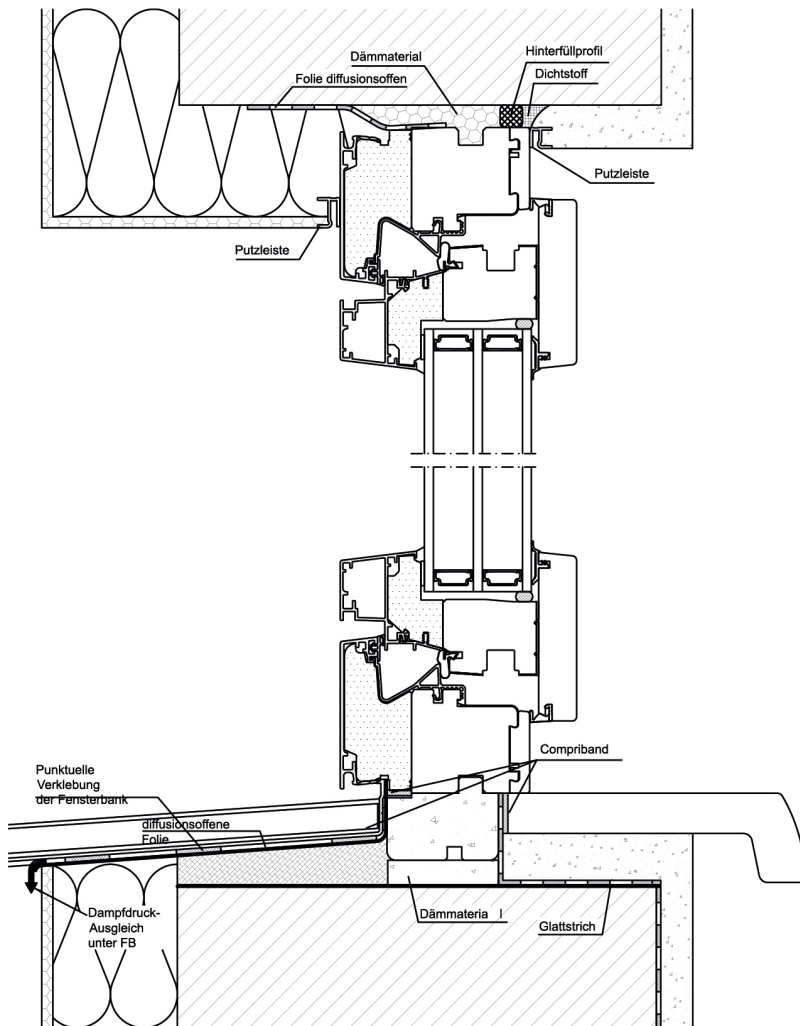
HF 410
 Sustained materials and colours of the interior decoration underline your minimalistic living style and bring individual elements into the forefront. HF 410 adapts perfectly to your interior design. Different colours and timber types offer you countless possibilities for your individual colour design of your interior spaces. Grey Oak as interior colour agrees with the modern living style with clear forms, plain materials and modest colours. Made to order, opening and fixed glazed windows can be integrated into large areas.

Sections

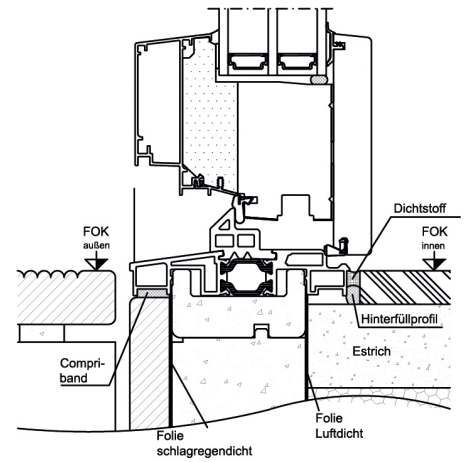


Construction connections

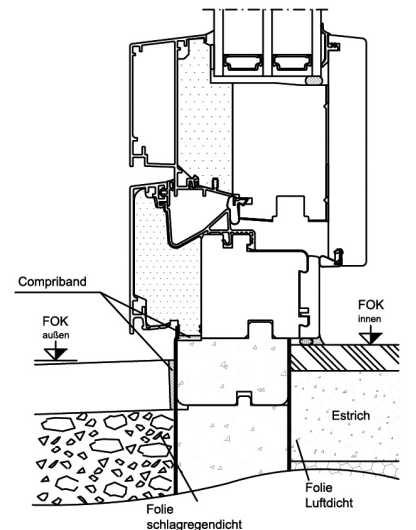
Putzanschluss innen und Vollwärmeschutz außen.
 Unterer Anschluss mit Alu-Sohlbank.



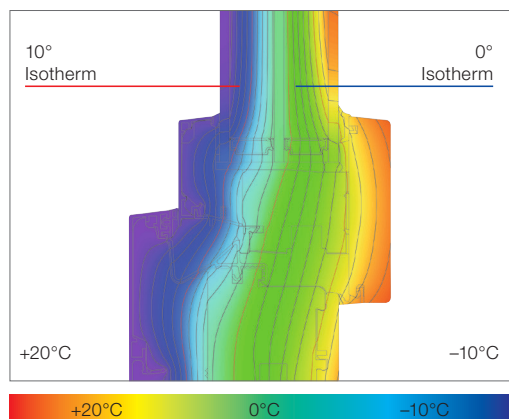
Bauanschluss mit Alu-Bodenschwelle 30mm.



Bauanschluss mit Purenitprofil unten



ATTENTION! Depicted drawing is symbolic only. Please observe national fitting guidelines such as ÖNORM B5320 in its respective valid version.



Optimal isotherm gradient to ensure low amounts of condensation

Due to the deep glass position, tremendous construction depth and the directly glued window panes glazing LIGHT ($U_g = 0.5 \text{ W/m}^2\text{K}$) can achieve a sensational U_w value of $0.70 \text{ W/m}^2\text{K}$ (with ISO spacer).

Technical information

- More aesthetics through narrow frame design
- Can be combined with HF 310, HF 210 as well as KF 410
- Aluminium clad outside facilitates highly weather-resistant protection in all colours
- I-tec Core – stable core with high strength
- I-tec Core – especially resource saving through optimum use of material timber
- Individual timber types and variety of surfaces independent of I-tec Core
- Thermal insulation with standard triple glazing and highly-insulating Iso edge compound
- 85 mm construction depth
- FIX-O-ROUND technology
- Fully concealed hardware
- Triple gasket system
- Drainage visible or concealed
- Highly-thermally insulating thermal foam for best thermal insulation (HCFC-, HFC- and FC-free)

Values

System	Glass set-up	Glass code	Spacer	Coating	Ug	Uf	Psi	Uw	Thermal cert.	Rw	C	Ctr	Sound cert.
HF410	4b/18Ar/4/18Ar/b4	3N2	Iso	light	0.5	0.86	0.033	0.70	YES	35*			NO
				SolarXPlus	0.5	0.86	0.033	0.70*	NO				
			Alu	light	0.5	0.86	0.079	0.80	YES				
				SolarXPlus	0.5	0.86	0.079	0.80*	NO				
	6b/18Ar/4/16Ar/b4	33U	Iso	light	0.6	0.86	0.033	0.78*	YES	39*			NO
				SolarXPlus	0.7	0.86	0.033	0.78*	NO				
			Alu	light	0.6	0.86	0.079	0.89*	YES				
				SolarXPlus	0.7	0.86	0.079	0.89*	NO				
	44b.2(VSG-S)/15Ar/4/12Ar/b44.2(VSG-S)	3FH	Iso	light	0.7	0.86	0.033	0.88*	YES	46*			NO
				SolarXPlus	0.7	0.87	0.033	0.88*	NO				
			Alu	light	0.7	0.86	0.079	0.99*	YES				
				SolarXPlus	0.7	0.87	0.079	0.99*	NO				
4b/16Ar/4/15Ar/b44.2(VSG-S)	34N	Iso	light	0.6	0.86	0.033	0.78*	YES	42*			MO	
			SolarXPlus	0.6	0.86	0.033	0.78*	NO					
		Alu	light	0.6	0.86	0.079	0.89*	YES					
			SolarXPlus	0.6	0.86	0.079	0.89*	NO					

Test certificates in home pure - values for home soft, ambiente and studio are identical

Internorm Window UK

Unit D, Colindale Business Park
2-10 Carlisle Road, NW9 0HN, London
Tel.: +44 (0) 208 205 9991

Email: office@internorm.co.uk