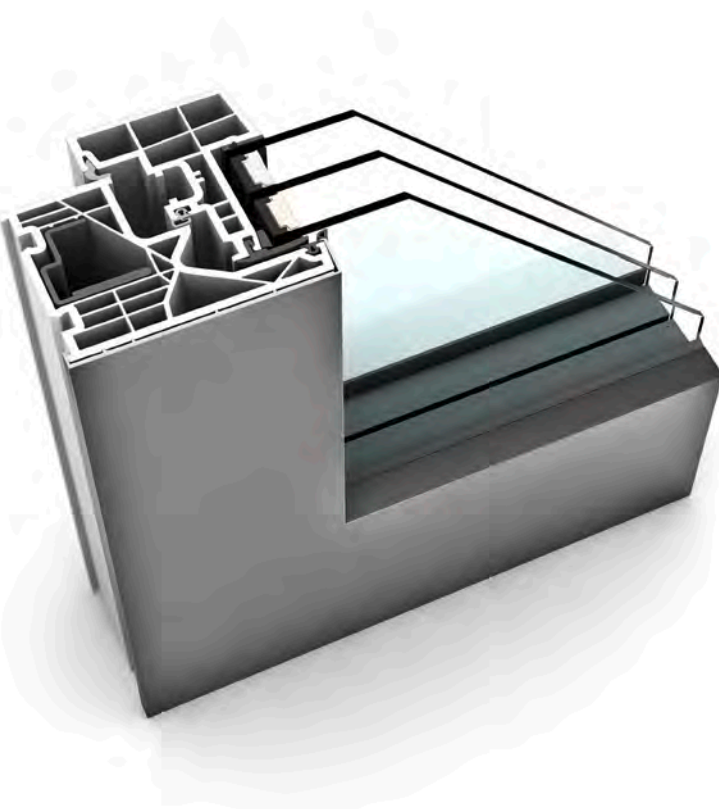







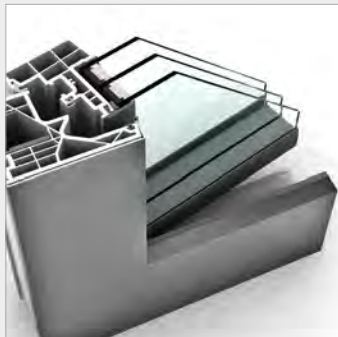
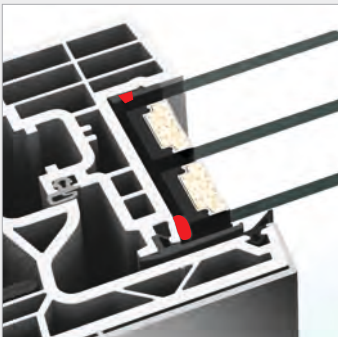
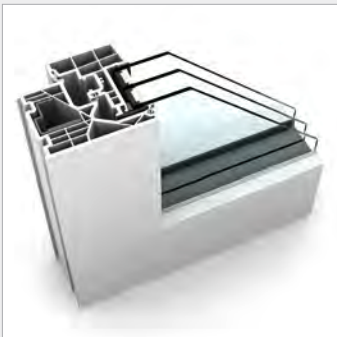
# KF 320 UPVC & UPVC-ALUMINIUM WINDOW



## PROPERTIES

|  |                           |   |
|--|---------------------------|---|
|  | <b>Thermal insulation</b> | $U_w$ as low as 0.65 W/(m <sup>2</sup> K) |
|  | <b>Sound reduction</b>    | up to 45 dB                               |
|  | <b>Security</b>           | RC1N, RC2                                 |
|  | <b>Locking</b>            | exposed                                   |
|  | <b>Construction depth</b> | 71/74 mm                                  |

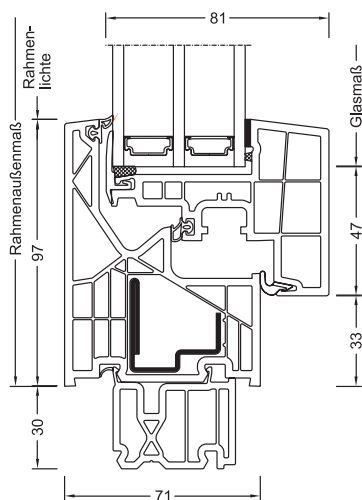
**I-tec Glazing**



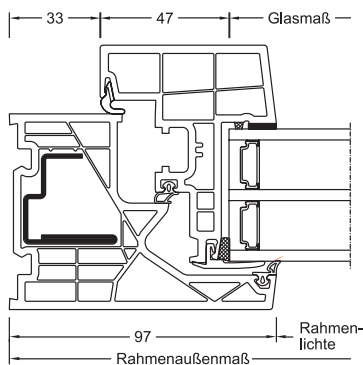
**KF 320**  
 The innovative glass sash of the KF 320 gives the impression of fixed glazing, yet it is still an openable window. The narrow, square-edged window frame emphasizes the reduced architecture of the design style studio in either the classical white UPVC version or with aluminium attachment clad. Three-sided rendering of the frame gives the appearance of almost frameless glass architecture. I-tec glazing ensures excellent stability, thermal insulation and security.

**Sections**

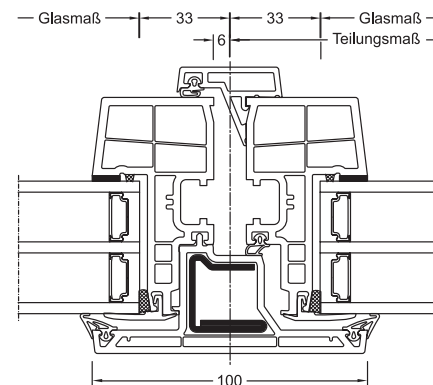
Vertical



Horizontal



Flying mullion



**Values**

| System                                  | Glass setup                  | Glass code | Spacer     | Coating    | U <sub>g</sub> | g   | U <sub>f</sub> | Psi   | U <sub>w</sub> | Therm. certificate | R <sub>w</sub> | C  | C <sub>tr</sub> | Sound certificate |
|---|------------------------------|------------|------------|------------|----------------|-----|----------------|-------|----------------|--------------------|----------------|----|-----------------|-------------------|
| KF320                                   | 4b/18Ar/4/18Ar/b4            | 3N2        | Iso        | light      | 0.5            | 54% | 1.0            | 0.033 | 0.72           | YES                | 34             | -2 | -5              | YES               |
|   |                              |            |            | SolarXPlus | 0.5            | 60% | 1.0            | 0.033 | 0.72           | YES                | 34             | -2 | -5              | YES               |
|   |                              |            | Alu        | light      | 0.5            | 54% | 1.0            | 0.076 | 0.83           | YES                | 34             | -2 | -5              | YES               |
|   |                              |            |            | SolarXPlus | 0.5            | 60% | 1.0            | 0.076 | 0.83           | YES                | 34             | -2 | -5              | YES               |
|   | 6b/18Ar/4/16Ar/b4            | 33U        | Iso        | light      | 0.5            | 54% | 1.0            | 0.033 | 0.72           | YES                | 38             | -2 | -5              | YES               |
|   |                              |            |            | SolarXPlus | 0.5            | 59% | 1.0            | 0.033 | 0.72           | YES                | 38             | -2 | -5              | YES               |
|   |                              |            | Alu        | light      | 0.5            | 54% | 1.0            | 0.076 | 0.83           | YES                | 38             | -2 | -5              | YES               |
|   |                              |            |            | SolarXPlus | 0.5            | 59% | 1.0            | 0.076 | 0.83           | YES                | 38             | -2 | -5              | YES               |
|   | 4b/16Ar/4/15Ar/ b44.2(VSG-S) | 34N        | Iso        | light      | 0.6            | 54% | 1.0            | 0.033 | 0.79           | YES                | 41             | -2 | -6              | YES               |
|   |                              |            |            | SolarXPlus | 0.6            | 60% | 1.0            | 0.033 | 0.79           | YES                | 41             | -2 | -6              | YES               |
|   |                              |            | Alu        | light      | 0.6            | 54% | 1.0            | 0.076 | 0.90           | YES                | 41             | -2 | -6              | YES               |
|   |                              |            |            | SolarXPlus | 0.6            | 60% | 1.0            | 0.076 | 0.90           | YES                | 41             | -2 | -6              | YES               |
| 44b.2(VSG-S)/15Ar/ 4/12Ar/ b44.2(VSG-S) | 3FH                          | Iso        | light      | 0.7        | 50%            | 1.0 | 0.033          | 0.86  | YES            | 45                 | -2             | -5 | YES             |                   |
|   |                              |            | SolarXPlus | 0.7        | 55%            | 1.0 | 0.033          | 0.86  | YES            | 45                 | -2             | -5 | YES             |                   |
|   |                              | Alu        | light      | 0.7        | 50%            | 1.0 | 0.076          | 0.97  | YES            | 45                 | -2             | -5 | YES             |                   |
|   |                              |            | SolarXPlus | 0.7        | 55%            | 1.0 | 0.076          | 0.97  | YES            | 45                 | -2             | -5 | YES             |                   |